

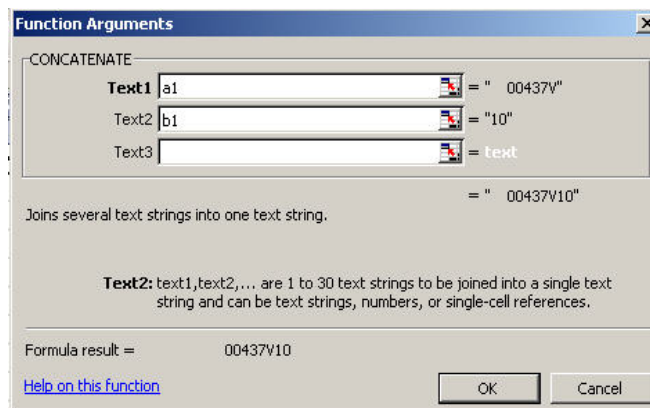
## Converting Company Level CUSIPs to CRSP CUSIPs

CUSIPs may be 6 digit (company specific), 8 digit (issue specific), or a 9 digit (includes check digit). Most databases use the 6 or 9 digit CUSIP. You may get data on a number of companies by creating a file of their CUSIP numbers. You can refer to this file and avoid having to input your request company code by company code. The creation of this list may start in another database such as SDC which will give you a CUSIP number that is not in the form that CRSP wants. You may use Excel to create the list that CRSP wants. CRSP uses 8 digit CUSIPs that are tied to the initial public offering.

First ask for the 6 digit CUSIP number in your report in SDC. Copy the row of CUSIP numbers from your report and paste it into a column in Excel. Make sure that the column of numbers is formatted as text, otherwise Excel will drop initial zeros that you will need to make the number accurate.

Now you have a column of numbers that all need to have 10 added to them to make them acceptable. The 10 points to the original offering (NCUSIP in CRSP). In the first cell next to your SDC CUSIP numbers (b) enter 10 and then move your cursor along the right edge of the cell until you see a black plus sign. When you see that, drag the plus sign down the number of cells that you have in the first column (a). When you release the button, Excel will auto-fill the column with 10.

	D4		fx
	A	B	
1	00437V	10	
2	262098	10	
3	66986W	10	
4	203668	10	
5	159864	10	
6	267920	10	
7	84749R	10	
8	816196	10	
9	904763	10	
10	913016	10	
11	58404W	10	
12	0018606	10	
13	67611V	10	
14	001744	10	
15	92839Y	10	
16	743815	10	
17	750323	10	



Now select the first cell in column c and click the function button at the top of the worksheet. When the insert function box appears, type in concatenate and hit enter.

Type in a1 in the first box and b1 in the second box and hit o.k. This will add the two columns together. Move the cursor over the cell edge until you see the black plus sign again and double click. This will auto-fill the formula for both columns.

C1      fx =CONCATENATE(A1,B1)

10cusip.xls

	A	B	C	D
1	00437V	10	00437V10	
2	262098	10	26209810	
3	66986W	10	66986W10	
4	203668	10	20366810	
5	159864	10	15986410	
6	267920	10	26792010	
7	84749R	10	84749R10	
8	816196	10	81619610	
9	904763	10	90476310	
10	913016	10	91301610	
11	58404W	10	58404W10	
12	0018606	10	001860610	
13	67611V	10	67611V10	
14	001744	10	00174410	
15	92839Y	10	92839Y10	
16	743815	10	74381510	
17	750323	10	75032310	

Select the new column of numbers and save them in a new text file. When you input your request to CRSP, choose “Search by” NCUSIP (historical CUSIP) and choose “File Containing Company Codes”. Type in the file name for your last text file or browse and select it.